

## SIMATIC HMI Comfort Panel Starter Kits



### SIMATIC HMI Comfort Panels

The SIMATIC HMI Comfort Panel family is a completely new designed line of Touch and Key Panels with 4 to 12 inch widescreen displays and integrated high-end functionality.

## Starter Kit SIMATIC HMI KTP400 Comfort



Starter Kit comprises:

- 1x SIMATIC HMI KTP 400 Comfort Panel
- 1x SIMATIC WinCC Comfort (TIA Portal)
- 1x SIMATIC HMI Manual Collection
- 1x Ethernet cable
- 1x SIMATIC HMI memory card 2 GB
- 10x protective foils

*Order No. 6AV2181-4DB20-0AX0*

Display	4.3 inch TFT widescreen display, 16 Mio colors
Resolution	480 x 272 pixels
Control elements	Touch screen, 4 function keys with LED
User memory	4 MB
Interfaces	1 x RJ 45 Ethernet for PROFINET 1 x RS 485/422 for PROFIBUS/MPI 1 x USB-host, 1 x USB- device 2 x SD card slot
Degree of protection	IP 65, NEMA 4x (front if mounted) / IP 20 rear
Installation cutout	122 x 98 mm (W x H)
Front panel	140 x 116 mm (W x H)
Device depth	48 mm
Configuration software	WinCC Comfort (TIA Portal) or higher

*US List \$885*

## Starter Kit SIMATIC HMI KP400 Comfort



Starter Kit comprises  
 1x SIMATIC HMI KP400 Comfort Panel  
 1x SIMATIC WinCC Comfort (TIA Portal)  
 1x SIMATIC HMI Manual Collection  
 1x Ethernet cable  
 1x SIMATIC HMI memory card 2 GB

*Order No. 6AV2181-4DB10-0AX0*

Display	4.3 inch TFT widescreen display, 16 Mio colors
Resolution	480 x 272 pixels
Control elements	Membrane Keypad (28 keys), 8 function keys with LED
User memory	4 MB
Interfaces	1 x RJ 45 for PROFINET 1 x RS 485/422 for PROFIBUS/MPI 1 x USB-host, 1 X USB-device 2 x SD card slot
Degree of protection	IP 65, NEMA 4x (front if mounted) / IP 20 rear
Installation cutout	135 x 171 mm (W x H)
Front panel	152 x 188 mm (W x H)
Device depth	48 mm
Configuration software	WinCC Comfort (TIA Portal) or higher

*US List \$885*

## Starter Kit SIMATIC HMI TP700 Comfort



Starter Kit comprises

- 1x SIMATIC HMI TP700 Comfort Panel
- 1x SIMATIC WinCC Comfort (TIA Portal)
- 1x SIMATIC HMI Manual Collection
- 1x Ethernet cable
- 1x SIMATIC HMI memory card 2 GB
- 10x protective foils

*Order No. 6AV2181-4GB00-0AX0*

*US List \$1200*

Display	7.0 inch TFT widescreen display, 16 Mio colors
Resolution	800 x 480 pixels
Control elements	Touch screen
User memory	12 MB
Interfaces	2 x RJ 45 for PROFINET (with integrated switch) 1 x RS 485/422 for PROFIBUS/MPI 2 x USB-host, 1 X USB-device 2 x SD card slot
Degree of protection	IP 65, NEMA 4x (front if mounted) / IP 20 rear
Installation cutout	197 x 141 mm (W x H)
Front panel	214 x 158 mm (W x H)
Device depth	63 mm
Configuration software	WinCC Comfort (TIA Portal) or higher

## Starter Kit SIMATIC HMI KP700 Comfort



Starter Kit comprises:

- 1x SIMATIC HMI KP700 Comfort Panel
- 1x SIMATIC WinCC Comfort (TIA Portal)
- 1x SIMATIC HMI Manual Collection
- 1x Ethernet cable
- 1x SIMATIC HMI memory card 2 GB

*Order No. 6AV2181-4GB10-0AX0*

Display	7.0 inch TFT widescreen display, 16 Mio colors
Resolution	800 x 480 pixels
Control elements	Membrane Keypad (28 keys), 24 function keys with LED
User memory	12 MB
Interfaces	2 x RJ 45 for PROFINET (with integrated switch) 1 x RS 485/422 for PROFIBUS/MPI 2 x USB-host, 1 X USB-device 2 x SD card slot
Degree of protection	IP 65, NEMA 4x (front if mounted) / IP 20 rear
Installation cutout	280 x 176 mm (W x H)
Front panel	308 x 204 mm (W x H)
Device depth	69 mm
Configuration software	WinCC Comfort (TIA Portal) or higher

*US List \$1200*

## Starter Kit SIMATIC HMI TP900 Comfort



Starter Kit comprises:

- 1x SIMATIC HMI TP900 Comfort Panel
- 1x SIMATIC WinCC Comfort (TIA Portal)
- 1x SIMATIC HMI Manual Collection
- 1x Ethernet cable
- 1x SIMATIC HMI memory card 2 GB
- 10x protective foils

*Order No. 6AV2181-4JB00-0AX0*

*US List \$1720*

Display	9.0 inch TFT widescreen display, 16 Mio colors
Resolution	800 x 480 pixels
Control elements	Touch screen
User memory	12 MB
Interfaces	2 x RJ 45 for PROFINET (with integrated switch) 1 x RS 485/422 for PROFIBUS/MPI 2 x USB -host, 1 x USB-device 2 x SD card slot
Degree of protection	IP 65, NEMA 4x (front if mounted) / IP 20 rear
Installation cutout	250 x 166 mm (W x H)
Front panel	274 x 190 mm (W x H)
Device depth	63 mm
Configuration software	WinCC Comfort (TIA Portal) or higher

## Starter Kit SIMATIC HMI KP900 Comfort



Starter Kit comprises:

- 1x SIMATIC HMI KP900 Comfort Panel
- 1x SIMATIC WinCC Comfort (TIA Portal)
- 1x SIMATIC HMI Manual Collection
- 1x Ethernet cable
- 1x SIMATIC HMI HMI memory card 2 GB

*Order No. 6AV2181-4JB10-0AX0*

*US List \$1720*

Display	9.0 inch TFT widescreen display, 16 Mio colors
Resolution	800 x 480 pixels
Control elements	Membrane Keypad (28 keys), 26 function keys with LED
User memory	12 MB
Interfaces	2 x RJ 45 for PROFINET (with integrated switch) 1 x RS 485/422 for PROFIBUS/MPI 2 x USB-host, 1 x USB-device 2 x SD card slot
Degree of protection	IP 65, NEMA 4x (front if mounted) / IP 20 rear
Installation cutout	338 x 206 mm (W x H)
Front panel	362 x 230 mm (W x H)
Device depth	63 mm
Configuration software	WinCC Comfort (TIA Portal) or higher

## Starter Kit SIMATIC HMI TP1200 Comfort



Starter Kit comprises:

- 1x SIMATIC HMI TP1200 Comfort Panel
- 1x SIMATIC WinCC Comfort (TIA Portal)
- 1x SIMATIC HMI Manual Collection
- 1x Ethernet cable
- 1x SIMATIC HMI memory card 2 GB
- 10x protective foils

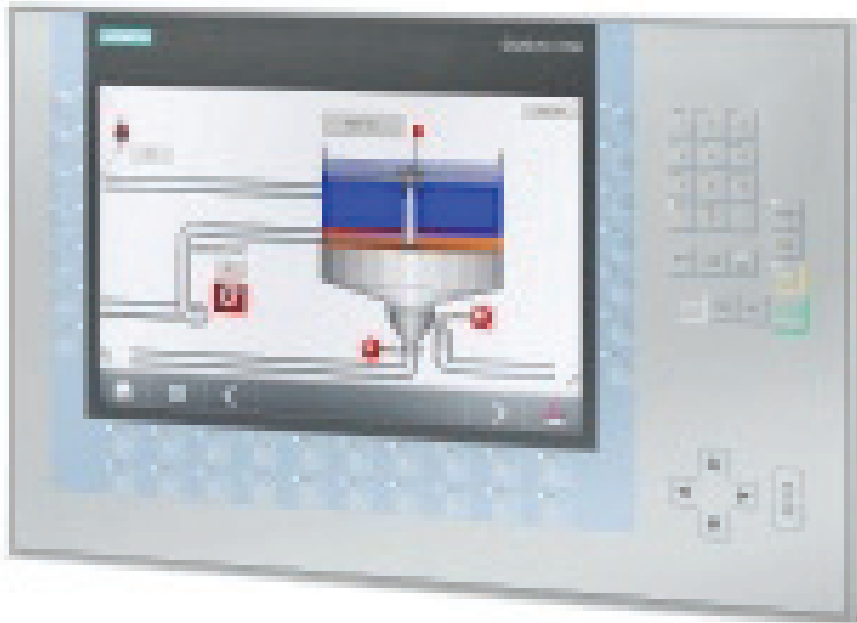
*Order No. 6AV2181-4MB00-0AX0*

Display	12.1 inch TFT widescreen display, 16 Mio colors
Resolution	1280 x 800 pixels
Control elements	Touch screen
User memory	12 MB
Interfaces	2 x RJ 45 for PROFINET (with integrated switch) 1 x RS 485/422 for PROFIBUS/MPI 2 x USB-host, 1 X USB-device 2 x SD card slot
Degree of protection	IP 65, NEMA 4x (front if mounted) / IP 20 rear
Installation cutout	310 x 221 mm (W x H)
Front panel	330 x 241 mm (W x H)
Device depth	63 mm
Configuration software	WinCC Comfort (TIA Portal) or higher

*US List \$2030*



## Starter Kit SIMATIC HMI KP1200 Comfort



Starter Kit comprises:

- 1x SIMATIC HMI KP1200 Comfort Panel
- 1x SIMATIC WinCC Comfort (TIA Portal)
- 1x SIMATIC HMI Manual Collection
- 1x Ethernet cable
- 1x SIMATIC HMI memory card 2 GB

*Order No. 6AV2181-4MB10-0AX0*

Display	12.1 inch TFT widescreen display, 16 Mio colors
Resolution	1280 x 800 pixels
Control elements	Membrane Keypad (28 keys), 34 function keys with LED
User memory	12 MB
Interfaces	1 x RJ 45 for PROFINET (with integrated switch) 1 x RS 485/422 for PROFIBUS/MPI 2 x USB-host, 1 x USB-device 2 x SD card slot
Degree of protection	IP 65, NEMA 4x (front if mounted) / IP 20 rear
Installation cutout	434 x 268 mm (W x H)
Front panel	454 x 289 mm (W x H)
Device depth	63 mm
Configuration software	WinCC Comfort (TIA Portal) or higher

*US List \$2030*